

# Masport®

## ROTARY MOWERS

### SERIES 18

Part Number  
565757

Model  
LAWN MARSHAL M&C 19

Engine 502361  
Loncin 139cc

Month and Year of First Manufacture: April 2019  
From Serial Number: 8352957

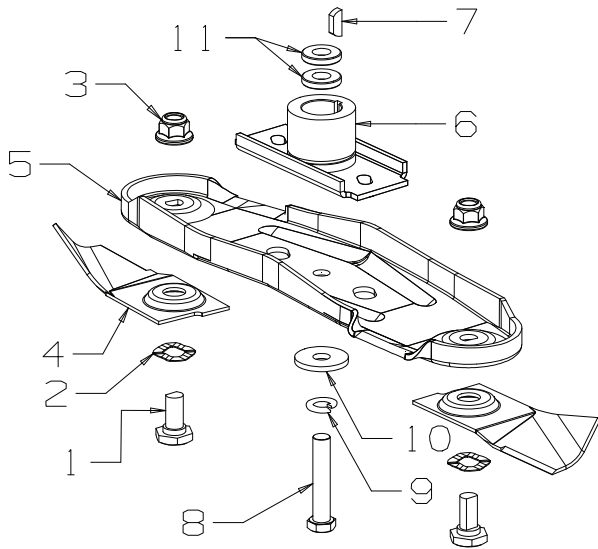


Spares Version

Issue B.1  
Apr 2022 PB  
ECN # 04380  
IPL Ref # 765757



## 460mm Quick Cut Blade Assembly

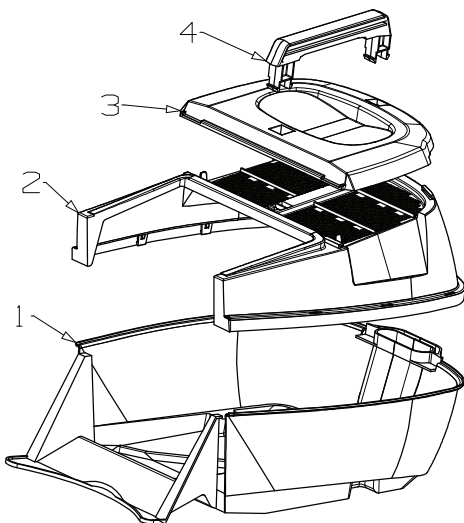


Item	Part No	Description	Qty
1	581707	Bolt- Pivot M10 x 22	2
2	580693	Washer, Wavy 13.4 x 24.2	2
3	503672	Nut, M10 Hex Nyloc Flange	2
4	980658	Blade- Quick Cut, 460mm	2
5	980653	Carrier- Blade, Quick Cut	1
6	014173	Driver Assy- Blade , 7/8"	1
7	500636	Key, Woodruff-5/8" x 5/32" x 1/4"	1
8	569296	Bolt; Hex NF 3/8" x 2" NYG8	1
9	500204	Washer, Spring 3/8"	1
10	503667	Washer, Flat 9.75 x 30 x 3.0	1
11	573585	Spacer- Blade Driver 22 x 4	2

### Blade & Bolt Sets

- 783690 Bolt Set, Inc Items 2 x 1, 2, 3
- 780658 Blade & Bolt Pack, Inc Items 2 x 1, 2, 3, 4
- 783261 Blade Assy 460, Inc Items 5 + 2 x 1, 2, 3, 4

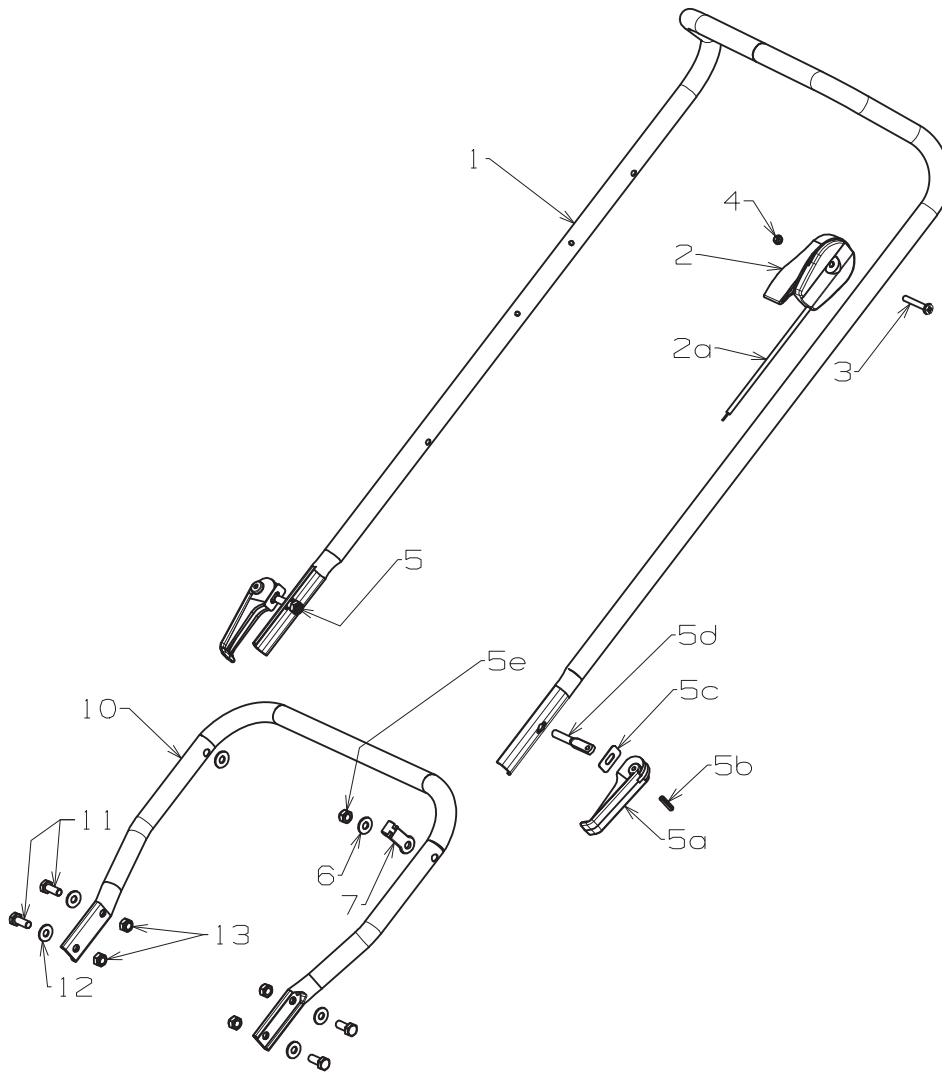
## Catcher Assembly- 18" Plastic



Item	Part No	Description	Qty
1	983295	Catcher- Bottom, 18" Brand Black	1
2	579117	Catcher- Top, 18" Black	1
3	580674	Catcher- Lid, 18" Black	1
4	580673	Catcher- Handle	1

### Replacement Catcher Assembly Options

- 980670 Catcher Assy Black 18" with Unbranded Base
- 783006 Catcher Assy (Branded) 18" with "Grass Full Indicator" & Black Base



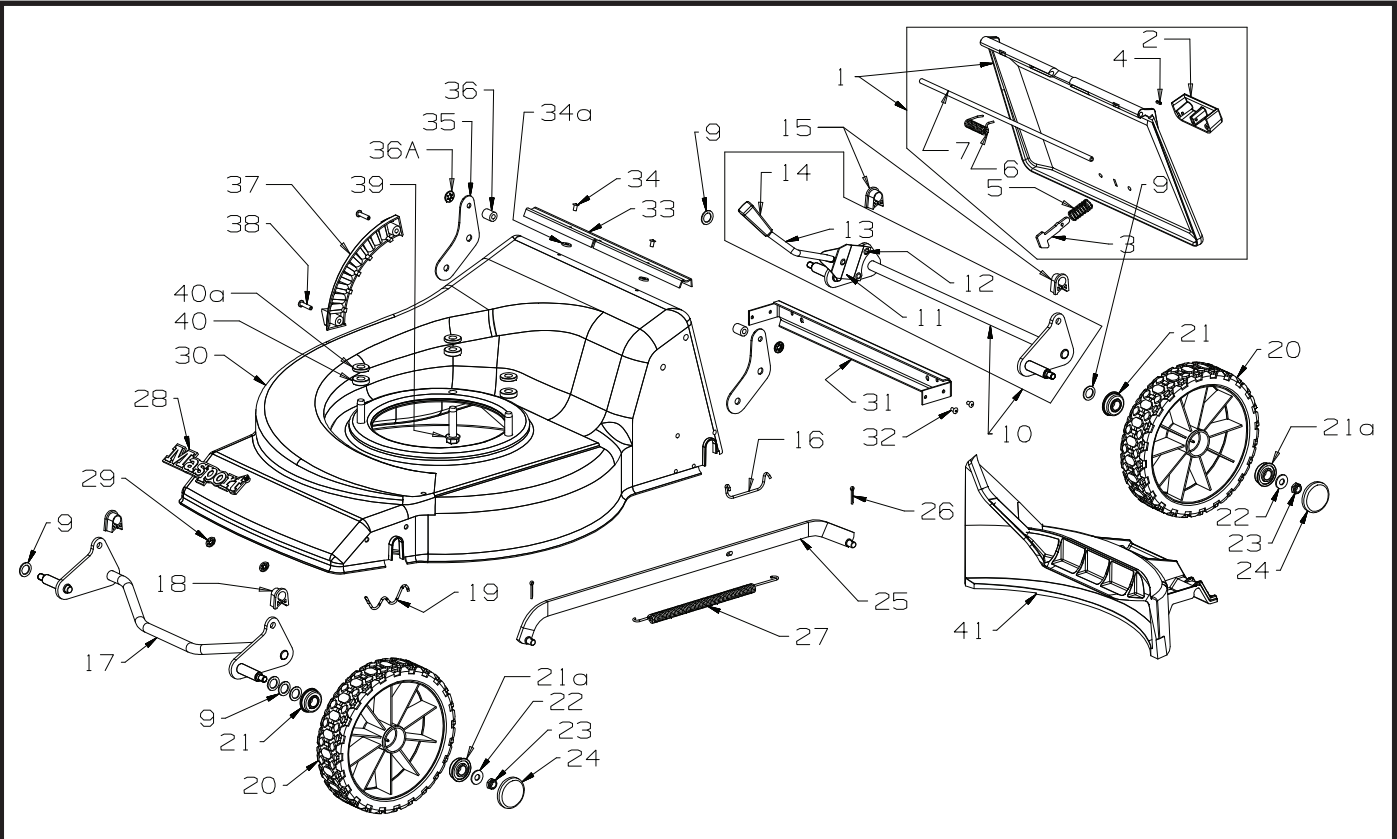
Item	Part No	Description	Qty	Not Illustrated
1	780616	Handle & Sleeve	PVC/BLK 1	503054 Tie- Nylon Cable, Black 1
2/2a	583458	<b>Throttle Ctrl &amp; Cable- Wescon</b>	1	573174 Decal, HSG Lawn Marshal 1
3	503604	*Screw, Pan M6 x 45 Poz	1	573715 Decal, HSG "Mulch & Catch" 1
4	501764	*Nut, M6 Hex Nyloc x 6mm thick	1	579414 Decal, Noise MAS 75dba 1
5	980456	<b>Cam Lock Assy (1 per)</b>	2	581180 Instruct, Catcher Assy 1
5a	580313	*Lever- Handle Locking	1	582241 Decal, Flap Caution 5T 1
5b	503369	*Pin, Tension 5 x 22	1	582062 Decal, Height Combo 1
5c	016777	*Washer- Slipper SS	1	583152 Owner Manual, Masport 1
5d	583041	*Stud- Handle Locking 61mm	1	
5e	501793	*Nut, M8 Hex Nyloc x 8mm thick	1	
6	501606	Washer, Flat 8 x 19 x 1.6	2	
7	581527	Retainer-Control Cable, Handle	1	
10	981257	Handle-Lower, "U" 18"	1	
11	501597	Screw, Set M8 x 20	4	
12	501606	Washer-Flat, 8 x 19 x 1.6	4	
13	501793	Nut, M8 Hex Nyloc x 8mm thick	4	



565757 Ser 18  
Lawn Marshal M&C 19  
Spares Version

# Masport®

Issue B.1  
Apr 2022 PB  
ECN # 04380  
IPL Ref # 765757



Item	Part No	Description	Qty	Item	Part No	Description	Qty
1	764242	<b>Flap Assy- Plastic, Latched Blk</b>	1	27	581463	Spring-Counter Balance	1
2	580602	*Handle - Flap	1	28	581240	Nameplate- MASPORT	1
3	981650	*Latch- Flap, Barbed	1	29	503150	Clip- Starlock, 5 dia	2
4	502019	*Pin, Tension 3.0 x 8	1	30	781782	<b>Hsg- Stl 18" ODS CO RED</b>	1
5	581106	*Spring- Latch, Flap	1	31	980608	*Brace-Rear, 3/4/600	1
6	581349	*Spring-Flap	1	32	581369	*Rivet-Pop 4.0 dia x 3.2 73SS5-2	4
7	779732	*Wire-Flap Pivot 6mm x 377mm	1	33	583151	Seal-Flap, Dust	1
9	503301	Washer, Flat 1/2 x 3/4 x 18g	6	34	581369	Rivet-Pop 4.0 dia x 3.2 73SS5-2	2
10	783256	<b>Axle Assy- Rear, Complete MSV</b>	1	34a	502170	Washer, Nylon 5 x 12 x 2.0	2
11	580649	*Spring- Leaf	1	35	567585	Bracket-Flap	2
12	503373	*Rivet- F/HD 3/16 x 27/64"	3	36	579733	Spacer-Flap	2
13	980733	*Rod- Height Selector (Sq Knob)	1	36a	503574	Clip- Starlock, 6mm dia	2
14	580056	*Grip-Height Lever, Square Black	1	37	580025	Quadrant-Height Selector	1
15	580668	Bush-Pivot, Rear Axle	2	38	503660	Rivet-Pop 4.8 dia x 9.0 73AS6-6	2
16	579292	Retainer-Axle, Rear, Steel Deck	2	39	583104	Screw, S/T 3/8" x 1-5/8" UNC	3
17	983281	Axle Assy- Front, 200mm	1	40	573585	Spacer- Blade Driver 22 x 4	3
18	580030	Bush-Pivot, Axle	2	40a	573585	Spacer- Blade Driver 22 x 4	3
19	529674	Retainer-Axle, Front "W"	2	41	583173	Insert- Mulching, 18"	1
20	580791	Wheel Assy-200mm, MK6 White (Includes 2 x 551212 per wheel)	4	Not Illustrated			
21	551212	Bearing- Wheel, Ball	4	765355	<b>Motor assy- Loncin(packed)139cc</b>	1	
21a	551212	Bearing- Wheel, Ball	4	502361	*Engine. LONCIN LC1P65FE 139cc	1	
22	501606	Washer, Flat 8 x 19 x 1.6	4				
23	503831	Nut, M8 Hex Nyloc 6mm thick	4				
24	581000	Hub Cap- Button MK6 Black	4				
25	571030	Rod Assy- Connecting, 175mm	1				
26	501056	Pin, Cotter 2.3dia x 16	2				

When ordering spares: PLEASE QUOTE PART NUMBER & DESCRIPTION, NOT illustrated number. Item Qty = 1 per part unless stated differently.  
**BOLD TEXT** = Assemblies. Descriptions starting with \* = items included in the assemblies & may not be available as a spares item.  
 Determine the left or right hand sides by standing in the operating position (standing at the handle).